



SLH-SERIES

Automatic Sliding Doors

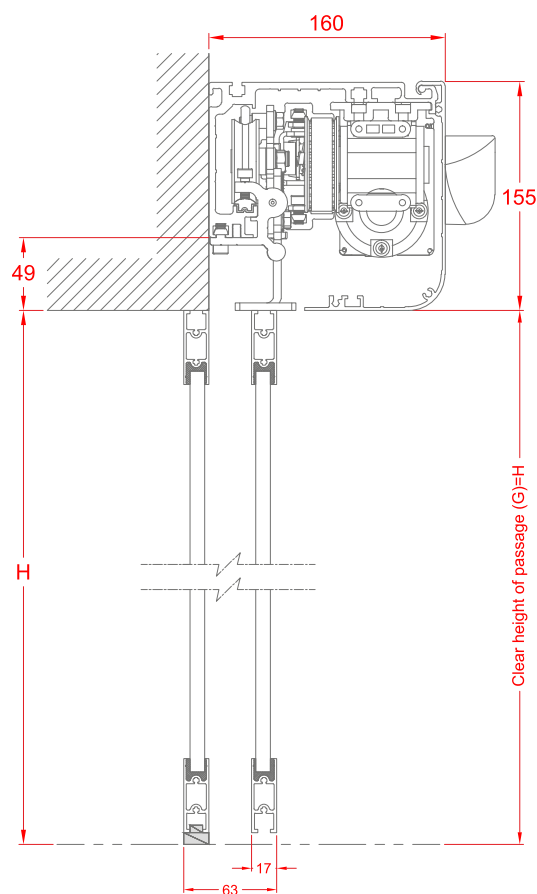
DeutscheTec SLH-Series

Outstanding quality and unique design have made the perfect combination in DeutscheTec SLH products. These highly intelligent models enjoy incredible strength as well. Employing world-famous German technology has made DeutscheTec SLH series into robust and sturdy products which will easily handle heavy weights – as a result of using triple-glazing glass, for instance – and painlessly resist tension – for example, caused by extreme weather conditions. Due to these models' smart design to be energy-saving and immune to wear, we have been able to present you an entry solution which is long-lasting, environment-friendly and an excellent value for your money. What is more, they have all successfully passed one-million-cycle test and are TUV approved.



This series' toughness, however, has not made it any less attractive. DeutscheTec SLH series' versatility promises to match all and every design you have in mind. We have a vision and it is to bring your vision to life!

Product Overview



	SLH239	SLH240	SLH211	SLH212
Compliant with german standard DIN 18650	✓	✓	✓	✓
Compliant with EU standard EN 16005	✓	✓	✓	✓
Compliant with EU standard EN 60335	✓	✓	✓	✓
Compliant with EU standard EN ISO 13849-1:2008	✓	✓	✓	✓
Compliant with EU low-voltage directives	✓	✓	✓	✓
Compliant with EU EMC directives	✓	✓	✓	✓
Manufactured according to ISO 9001:2000	✓	✓	✓	✓
TÜV approved	✓	✓	✓	✓
CE conformity	✓	✓	✓	✓
Tested for 1,000,000 cycles	✓	✓	✓	✓

	SLH239	SLH240	SLH211	SLH212
Opening width - single panel	800 - 2000mm	800 - 2000mm	800 - 2000mm	800 - 2000mm
Opening width - double panel	1000 - 3000mm	1000 - 3000mm	1000 - 3000mm	1000 - 3000mm
Max leaf weight, single	150kg	200kg	150kg	200kg
Max leaf weight, double	2 x 100kg	2 x 150kg	2 x 100kg	2 x 150kg
Operator height	155mm	155mm	155mm	155mm
Operator depth	160mm	160mm	160mm	160mm
Opening speed	100 - 550mm/s	100 - 550mm/s	100 - 550mm/s	100 - 550mm/s
Closing speed	100 - 500mm/s	100 - 500mm/s	100 - 500mm/s	100 - 500mm/s
Hold-open time	0 - 30s	0 - 30s	0 - 30s	0 - 30s
Ambient temperature	-15 to +50°C	-15 to +50°C	-15 to +50°C	-15 to +50°C
Protection class	IP20	IP20	IP20	IP20
100% German-made operator kit	✓	✓	✓	✓
Track profile	Anti-crash stainless steel	Anti-crash stainless steel	Aluminum	Aluminum
Anti-noise rubber profile	✓	✓	✓	✓
External protected power supply	✓	✓	✓	✓
Input power	230V AC ±10%, 50/60Hz	230V AC ±10%, 50/60Hz	230V AC ±10%, 50/60Hz	230V AC ±10%, 50/60Hz
Gear motor power	50W	100W	50W	100W
Maximum power consumption	200W	250W	200W	250W
Maximum operation cycles with 2.2 Ah backup battery (optional)	450	400	450	400
Maximum operation cycles with 7.2 Ah backup battery (optional)	1100	1000	1100	1000

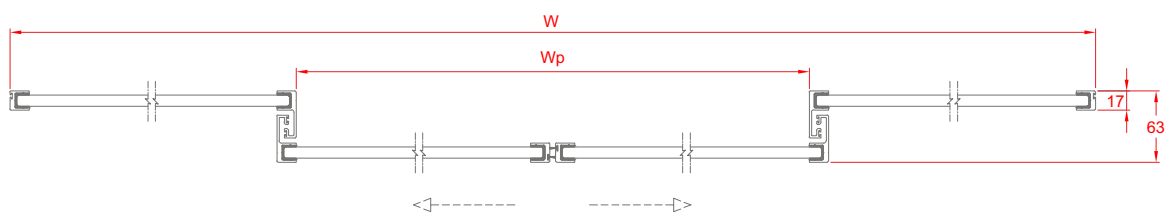
	SLH239	SLH240	SLH211	SLH212
Possibility to use safety sensors with testing signal for opening direction	✓	✓	✓	✓
Possibility to use safety sensors with testing signal for closing direction	✓	✓	✓	✓
Possibility to adjust force limitation according to DIN 18650 and EN 16005	✓	✓	✓	✓
Mechanical key switch	✓	✓	✓	✓
24V DC output for external accessories	✓	✓	✓	✓
Power lock	✓	✓	✓	✓
Possibility of using electro-mechanical lock (optional)	✓	✓	✓	✓
Lock monitoring	✓	✓	✓	✓
Possibility of using highly secure electromechanical multi-point lock (HSML)	✓	✓	✓	✓
Possibility of using digital programme switch (optional)	✓	✓	✓	✓
Read-out error memory with error codes (with digital programme switch)	✓	✓	✓	✓
Programmable output (optional)	✓	✓	✓	✓
Programmable input (optional)	✓	✓	✓	✓
Possibility of using more software and hardware options by using DEAP device (optional)	✓	✓	✓	✓

Variants:

	SLH239	SLH240	SLH211	SLH212
V-Shape door	✓	✓	✓	✓
Curved door	✓	✓	✓	✓
Break out	✓	✓	✓	✓
Telescopic door	✓	✓	✓	✓

Frame types:

THB	✓	✓	✓	✓
TBS	✓	✓	✓	✓
UTS	✓	✓	✓	✓
Saturn	✓	✓	✓	✓
Frameless	✓	✓	✓	✓



Control Unit

Ideal Solution for Ideal Entry

Our innovative and smart entry solution, SLH series, has been certified by TÜV NORD CERT GmbH for its superior quality, excellent performance and safety.



Highest Quality:

DeutscheTec has joined up with Leesys GmbH, a part of Siemens Enterprise Communication, to create a fully German high-tech novel control unit. Our latest software has equipped this control unit to save more energy, be more user-friendly and allow door networking for up to 256 doors without any additional device requirement and unlimited number of doors by building segmented network branches.

Stainless Steel and Aluminum Track Profiles



One of a Kind

DeutscheTec SLH series' detachable stainless steel profile together with its rubber profile have brought you smooth hushed performance. Our wear-free sturdy profile sets are here to ensure the doors' durability and softness of operation.

Our rail profile is a combination of a changeable aluminum profile and sound absorbing rubber profile. The wear freedom and the robustness increases the lifetime of the sliding door and guarantees quietness even after years. The rubber profile prevents the transfer of sounds from the sliding door to the building parts. You will enjoy the quietness.



Power lock

In many cases, there is no real need for (optional) electromechanical lock and buildings ensure security by other means. However, it is necessary for the entrance to be allowed limited access. In this case, power lock free function is a wholesome solution.



When the door is locked, if there is pressure on it for becoming open, the motor will use its full power in the opposite direction and make it practically improbable to enter for unauthorized individuals.

Highly secure electromechanical multi-point lock (HSML)

This highly secure electromechanical multi-point lock is a real necessity in places where increased security is demanded. Using steel pins, it will simultaneously lock the leaves together and to the floor, which has been pre-drilled to provide the required holes for the pins. Intruders will be slowed down and stopped due to this lock's power to resist dynamic/static forces and aggressive tools such as wedges.

Gear Motor

Strength and Efficiency

SLH series is driven by a highly powerful reliable electromotor made by German manufacturer, Dunkermotoren GmbH. Having met various international standards, our motors are made service-free, sturdy and long-lasting.



SLH-SERIES

Automatic Sliding Doors

SLH240



DeutscheTec SLH240 is your ultimate solution for demanding interior or exterior applications or where tall or wide heavy doors and double or especially triple-glazing glass is a necessity. This model has brought superior strength and incredible resistance to wear together with beauty and elegance. Due to its rubber profile, you hear nothing more than a whisper. Its stainless steel track profile promises to stay with you for all time and make your choice energy-saving and cost-effective. SLH240 has been certified as a product which satisfies all safety needs.



SLH239



Deuschtec SLH239 is your best option for interior or exterior applications with high traffic where normal glass and average-sized door will do just fine. This reliable model is an excellent combination of futuristic design and top-notch technology. Its stainless steel track profile offers strength and longevity. Its rubber profile has the gift of quietness with it. SHL239's highest standards ensure its top-of-the-range quality.



SLH212



Deuschtec SLH212 is an economic option for interior and exterior applications where tall or wide heavy doors and double or especially triple-glazing glass is a necessity. Though of very different natures, its sturdiness and glamour will capture your attention. It murmurs and the advanced technology which has made this possible also guarantees the highest levels of safety imaginable. SLH212's standards assure your 100% satisfaction.



SLH211



Deuschtec SLH211 is an economic choice for any modern architecture where door weight is less than 100 kg for each leaf. With the variety this model offers, every vision you have can come to life. SLH211 meets your need for security, addresses your concern for the environment and takes care of your budget by bringing you a product which lasts forever! This highly intelligent model's standards are a proof of its safe smooth silent function.



Product Overview

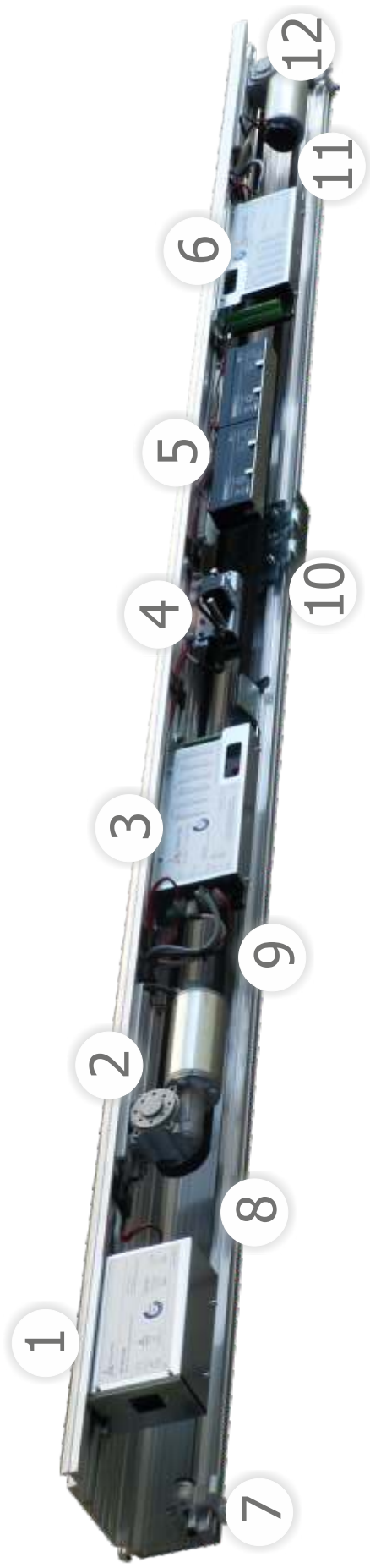
Escape Doors

This version is equipped with two control units and two motors. The incredible system drives doors by one Gear motor and Controller (Slave) for opening cycles and the other Gear motor and Controller (Master) for closing cycles in order to guarantee secure escape for users. Using 2.2 Ah batteries, even in case of power-failure or system error, these doors will function safely by keeping open to ensure secure exit.

SLH240ES	
Opening width - single panel	800 - 2000mm
Opening width - double panel	1000 - 3000mm
Max leaf weight, single	200kg
Max leaf weight, double	2 x 150kg
Operator height	155mm
Operator depth	160mm
Opening speed	100 - 550mm/s
Closing speed	100 - 500mm/s
Hold-open time	0 - 30s
Ambient temperature	-15 to +50°C
Protection class	IP20
100% German-made operator kit	✓
Track profile	Anti-crash stainless steel
Anti-noise rubber profile	✓
External protected power supply	✓

Input power	230V AC±10%, 50/60Hz
Gear motor power	100W
2nd motor for emergency opening	Complete unit
Using dual motor gear and control unit set for safe emergency opening and double life time operation	✓
Maximum power consumption	250W
Backup battery for emergency opening	✓
Combined safety and activation sensors with testing signal and 100Hz out put for escape routes (according to DIN 18650 & EN 16005)	✓
Emergency exit routes in both directions	✓
Mechanical key switch	✓
24V DC output for external accessories	✓
Power lock	✓
Possibility of using electro-mechanical lock (optional)	✓
Lock monitoring	✓
Possibility of using highly secure electromechanical multi-point lock (HSML)	✓
Possibility of using digital programme switch (optional)	✓
Read-out error memory with error codes (with digital programme switch)	✓
Programmable output (optional)	✓
Programmable input (optional)	✓

Possibility of using more software and hardware options by using DEAP device (optional)	✓
Variants	
Telescopic door	✓
Frame types	
THB	✓
TBS	✓
UTS	✓
Compliant with german standard DIN 18650	✓
Compliant with EU standard EN 16005	✓
Compliant with EU standard EN 60335	✓
Compliant with EU standard EN ISO 13849-1:2008	✓
Compliant with EU low-voltage directives	✓
Compliant with EU EMC directives	✓
Manufactured according to ISO 9001	✓
TÜV approved	✓
CE conformity	✓
Tested for 1,000,000 cycles	✓



- 1 - Power Unit
- 2 - Gear Motor
- 3 - Control unit
- 4 - Electromechanical Lock
- 5 - Battery Module
- 6 - Backup Control Unit

- 7 - Stopper
- 8 - Stainless Steel Track Profile
- 9 - Rubber Track Profile
- 10 - Hanger & Roller
- 11 - Timing Belt
- 12 - Backup Gear Motor

SLH240ES



Deuschtec SLH240ES is your ultimate solution for having highest levels of safety in escape routes. This system drives doors by one Gear motor and Controller (Slave) for opening cycles and the other Gear motor and Controller (Master) for closing cycles. Such function ensures more than doubled life time and silent operation. In emergency cases, both sets are able to open the door.

Deuschtec SLH240ES is your best option for interior or exterior in normal and emergency exits especially where tall or wide heavy doors and double or especially triple-glazing glass is a necessity. This model has brought superior strength, incredible resistance to wear together with high levels of security. Due to its rubber profile, you hear nothing more than a whisper. Its stainless steel track profile promises to stay with you for all time and make your choice energy-saving and cost-effective. SLH240ES has been certified as a product which satisfies all safety needs.



Variants

TL240 - Telescopic Systems



Telescopic doors bring you the gift of uniqueness and give you the system which is unlike any other traditional old-fashioned one. Employing TL profile set and kit, you will be able to transform your normal sliding door into a telescopic one. Due to having four moveable leaves instead of two, you can enjoy much more convenience in a limited space.

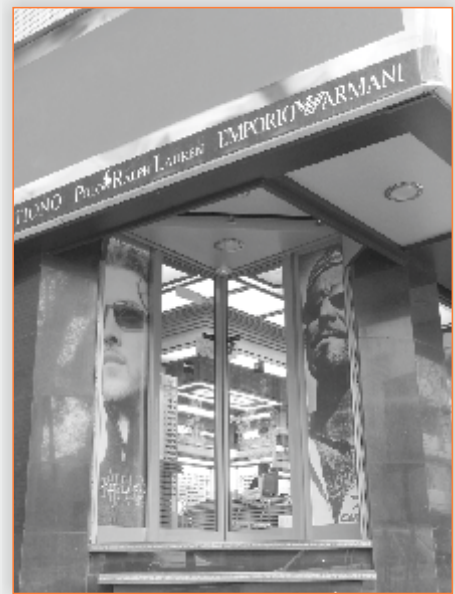


TL series is designed in a way that the back leaves move with half the speed of the front leaves. With this stealthy coordinated movement, both back and front leaves reach the fully-open point simultaneously and provide you with an opening up to 2/3 of the installed width. TL series telescopic mechanism is designed and made in a way that can easily give a brilliant performance in places with high traffic. Having passed one-million-cycle test, this mechanism is also considered absolutely suitable for escape doors.



VS240 - V-Shape Doors

The most ideal solution to satisfy certain architectural needs is a Deutshtec triangle sliding door. If you wish to have that special entrance to welcome traffic in and out of your building, the search is over! Our triangle sliding doors have simple movements, pure gorgeousness and rigorous standards.



CR240 Curved Sliding Door



We have promised to bring every single vision of yours to life and Deutshtec curved sliding solution is one of the many ways to deliver this promise. This model gives your facade a magnificent look like no other entrance. Offering a wider opening, Deutshtec curved sliding door is a perfect choice when you desire great ease of passage in hectic times.

BR240 - Break out Systems



In times when a mechanical system for emergency exit is required or in places which there might be a need for full opening of the door, whether it is fixed or movable, to allow oversized objects to pass, Deuschtec collapsible SLH series is the impeccable option. In case of emergency, by simply pushing the door forward, individuals are able to open both fixed and movable doors as swing ones.



Accessories

Digital Programme Switch

This optional part enjoys ease of use and advanced technology. Deuschtec engineers have employed electronic components which specifically match the system's control unit. Its operating modes can be easily selected and adjusted.



Mechanical Key Switch

Another optional yet irresistible part is this key switch which has five modes of full open, partial open, lock, automatic and one-way, includes two removable keys and is fast and easy to install and use.



Battery Module

SLH series will continue functioning even after a power-cut thanks to their powerful 2.2 Ah batteries and unique design of their control units. Needless to say, the number of operation cycles depends on some key factors such as door leaves' weight, traffic, speed adjustment, etc. These models can be installed with 7.2 Ah batteries as well.



Electromechanical Lock

Absolutely secure Deuschtec electromechanical lock is characterized by its reliable functionality, durability and longevity. This important part is not only convenient but also meets your safety needs.





Am Fuchsbau 13 • 15345 Petershagen / Eggersdorf • Germany
Tel.: +49 (0) 3341 / 30 22 4 - 0 • Fax: +49 (0) 3341 / 30 22 4 - 25

info@deutschtec.de • www.deutschtec.de

 <https://www.facebook.com/deutschtec>